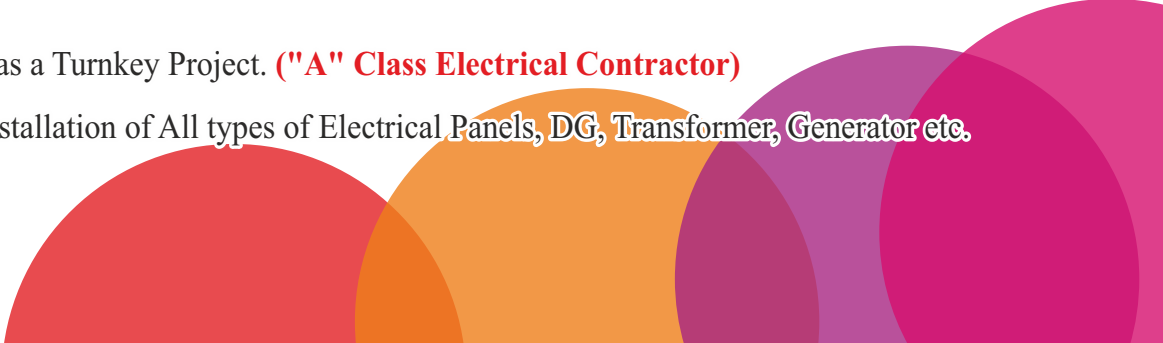


Aadya Power Projects

(An ISO 9001 : 2008 Company)
CPRI Approved

**L&T (Now Lauritz Knudsen)
Authorised Manufacturer
& Solution Provider**

- ★ Manufacturer of L&T Make HT Panels (11 & 33 KV) (**L&T Authorised Manufacturer for MV Product**)
 - ★ FCMA & Slip Ring Starters for LT&HT Motors (3.3KV, 6.6KV & 11KV)
 - ★ Solution Provider with L&T Make VFD, Soft Starter & PLC (**L&T Authorised (ISP) Integrated Solution Provider**)
 - ★ Manufacturer of All Types of Electrical Panels as MCC Panel, PCC Panel, AMF Panel, VFD Panel, Soft Starter Panels, PLC Panels, PDB Panel, Capacitor Panel, Control Desk, Lighting Feeder Pillar, Meter Board, Rising Main, Busduct Etc.
 - ★ Supplier of All Electrical equipment such as DG, Transformer, Cable Trays, earthing, Cables, CCTV Camera etc.
 - ★ All types of Electrical Work as a Turnkey Project. (**"A" Class Electrical Contractor**)
 - ★ Easy Service, Solutions & Installation of All types of Electrical Panels, DG, Transformer, Generator etc.
- 

We Aadya Power Projects take this opportunity to introduce ourselves as the most respected Medium Voltage & Low Voltage Switchboard Manufacturer. We are engaged in the business of providing the 'Total Solution' in Customized Low Voltage Switchboard Control and Automation along with Medium Voltage (11KV & 33KV) Switchboards.

Our Vision

To emerge as a progressive company with a deep Foresight for the futuristic needs.

To innovate and manufacture products those Satisfy our clients by maintaining highest quality Standards.

To provide our customer the latest and the best at Very competitive price.

Commitment

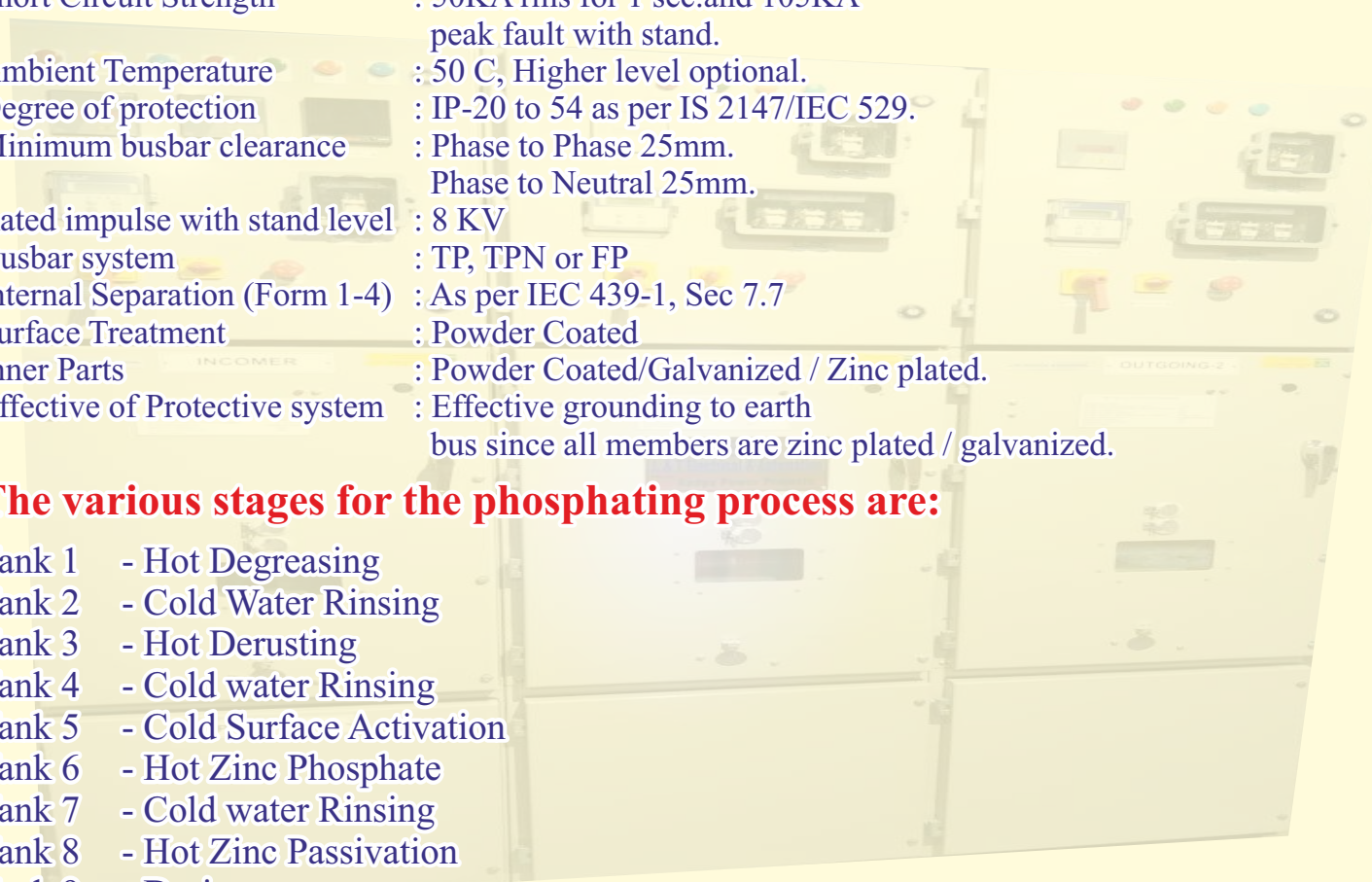
Commitment is the key word in our company; we provide our products & services as per our Commitment to the clients.

We have thorough-bred professionals, well trained in their respective field.

They understand the customer needs, suggest solution and satisfy diverse customer requirements by providing efficient after sales service.

The switchgear panels manufactured by us conform to the relevant IS/IEC standards, viz: IS 8623/IEC 439-1. We can offer the panels for fault level up to 50KA (Higher level can be offered against specific requirement). The ingress protection level is upto IP 55 as per IS 2147/IEC 529 and also internal separation up to form 4. A strict quality assurance system is adopted at every stage with clearly laid down Procedures. The panels are Subjected to routine tests at our works so that it can be commissioned at site with very little pre-commissioning Checks. In order to meet the delivery commitment, we have tied up with the leading switchgear, control gear and automation Product manufactures as their authorized channel partners.

Technical Data



Rated Insulation Voltage	: 1000 Volts, 50 Hz.
Rated Operational Voltage	: Upto 690 V.
Rated Current	: 6000 Amps.
Short Circuit Strength	: 50KA rms for 1 sec.and 105KA peak fault with stand.
Ambient Temperature	: 50 C, Higher level optional.
Degree of protection	: IP-20 to 54 as per IS 2147/IEC 529.
Minimum busbar clearance	: Phase to Phase 25mm. Phase to Neutral 25mm.
Rated impulse with stand level	: 8 KV
Busbar system	: TP, TPN or FP
Internal Separation (Form 1-4)	: As per IEC 439-1, Sec 7.7
Surface Treatment	: Powder Coated
Inner Parts	: Powder Coated/Galvanized / Zinc plated.
Effective of Protective system	: Effective grounding to earth bus since all members are zinc plated / galvanized.

The various stages for the phosphating process are:

- Tank 1 - Hot Degreasing
- Tank 2 - Cold Water Rinsing
- Tank 3 - Hot Derusting
- Tank 4 - Cold water Rinsing
- Tank 5 - Cold Surface Activation
- Tank 6 - Hot Zinc Phosphate
- Tank 7 - Cold water Rinsing
- Tank 8 - Hot Zinc Passivation
- Tank 9 - Drying

Testing

- ◆ All low voltage switchboards assemblies under goes the routing tests by trained personnel conducting following tests:
 - ◆ Visual check
 - ◆ Dimensional check
 - ◆ Conformity to electrical diagrams and ratings of components.
 - ◆ Functional check
 - ◆ Insulation test
 - ◆ High voltage test
- ◆ Complete set of documents is supplied with each board i.e., electrical drawings and routine test reports.

Manufacturing Range



HT PANEL (11/C+20/G)

◆ 33KV 1250A 26.3KA

◆ 11KV 800A 26.3KA

HT panel in electrical system is a switching point where HT supply can be connected or disconnected with load.

HT cables are connected to circuit breakers from incoming side & outgoing side also. HT supply can be switched on or off by operating electrically operated switch (or by using push button of the breaker).



PCC PANEL (Power Control Centre)

6300A Transformer Incomer & 2 Nos. of 1250A DG Incomer with Synchronizing and output as per SLD required.

The Power Control Center Panel works by combine circuits from several places into a single central hub. This enables access to the whole electrical connections of a grid, Industry from a single place. The electricity for all circuits is controlled by a single main power switch in a PCC panel.



MCC PANEL

(Motor Control Centre Panel for All Application, Design as per SLD) A **motor** is a device that utilizes electrical energy to do mechanical operations such as rotating a pump, fan, blower, etc.

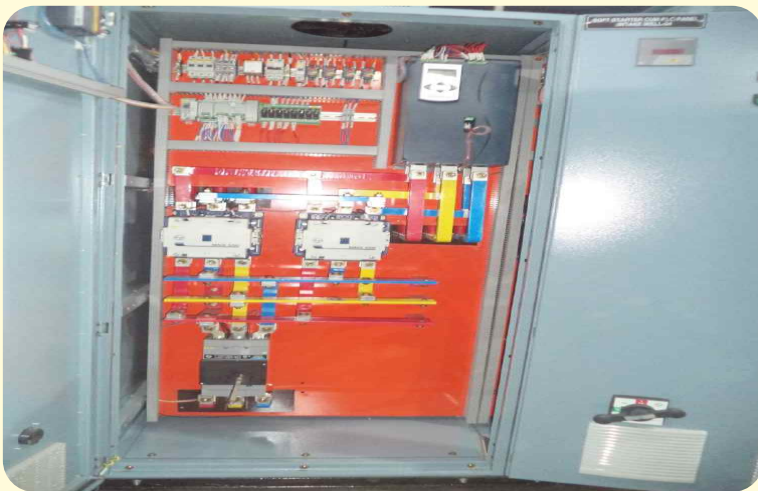
Due to industrial development, the requirement for the automation and mechanization of the different industrial processes is increased. The mechanization of the different industrial processes requires many **motors**, so in order to control all these motors, MCC's are required.



VFD PANEL **Different rating of VFD Panel**

415VAC 3 Phase out put
I/P: 380-460V, Output Frequency:
0- 50Hz - 60Hz

A VFD control panel brings together or combines motor control devices and circuit protection devices in an enclosure. This control panel also offers protection to these devices from moisture, corrosion, dust, and other damaging factors. VFD control panels have different ratings from as per customer requirement.



SOFT STARTER PANEL

160 KW Soft Starter Panel with
415VAC 3 Phase out put
I/P: 380-460V, Output Frequency:
50Hz - 60Hz

The Soft starter panels help protect the motor and connected equipment from damage by controlling the terminal voltage thus limiting the inrush current and providing a gradual ramp-up to full speed. Soft starter panels are used in industries where controlled start up is needed to avoid spikes, torque in belt driven systems like conveyers, gears, etc. Soft starter panels are economical compared to VFD panels and are used as application here space is a concern.



PLC PANEL

(As per Automation required of Plant/Machine)

Programmable Logic Controllers (PLCs) are small industrial computers with modular components designed to automate customized control processes. PLCs are often used in factories and industrial plants to control motors, pumps, lights, fans, circuit breakers and other machinery.

Integrated PLC Panel can monitor any process and provide data wherever and however you need it.



CAPACITOR PANEL

**500 KVAR Capacitor Panel
3Phase 415VAC**

Capacitor Panels are special devices made to this end itself, as it verily increases the power factor correction by a large magnitude. Normally the electric load running all around a facility or residence is reactive in nature and can prevent in great losses as pointed to before.

BUSDUCT

**6300A 3 Phase 4 Wire System
with 50KA Breaking Capacity**

Bus duct is a sheet metal duct with aluminum or copper bus bars, and used as a reliable link for transferring power from one equipment to other at desired voltage levels. It is used as an alternate means for conducting electricity to cable bus and power cables.



Services

Design & Engineering Services

We Provide design & Engineering Services for various industries & different projects.

Services for Operation & Maintenance of Electrical Systems/Electrical Installation/Security Systems/IT Systems/Industrial Lighting Systems for Factory/Plant/Housing as All Types of Electrical LT Panels, HT Panels, Transformers, DG Sets etc.

Automation Work

System Design

Turnkey Project

Substation upto 33KV

Cable Laying (LT, HT)

Cable Termination (LT, HT)

Cable Tray Laying

Busduct

Rising Main Installation

Chemical Earthing

CCTV Camera

Solar System

- We do complete Turnkey Projects of Electricals, Instrumentation & Automation.
- We take Annually Maintenance Electrical (AMC) for Plant/ Electrical Panels / Machine Panels etc.
- We are specialized in Executing All Electrical, Instrumentation & Automation work of different capacity Sewage Treatment Plants, Water Treatment Plants, Pump house, Underground reservoir etc.
- We do the services for Electrical Panel Installation and Commissioning.

Our primary Mission is to provide high quality products and services to our clients. (Aadya Power Projects) has carefully combined Products & Manpower to offer the best solution to the industry with dedication towards servicing and maintenance for the system supplied by us. We have a group of qualified, trained and experienced engineers involved in providing specialized technical services & Support in the area of Industrial/Domestic electrical.







We measure our success by our client success, we ensure that our Products, Services and solutions are aligned to help you with the business challenges faced in your industry and we deliver those solutions according to processes and procedures. We received a very good response and support from our clients and vendors. We are committed to serve our all client in a efficient manner. Expecting supported by our clients and vendors in future.

With Warm Regards,

"When you serve the customer better, they always return on your investment."

Ashutosh Shrivastava

Major Clients :-

HINDALCO ITC NESTLE	HINDUSTAN UNILEVER LTD. TATA MOTORS CENTURY PAPER	MRF TYRE GOOD YEAR TYRE SYWBIUSYS DLF	HNB KHILLARI VVIP L&T	ESSEL INFRA SUPERTECH SSG INFRATECH	R.K. ENGINEERS MAITHAN ISPAT TULIP INFRA	AIREF ENGINEERS
						HALDIRAM DECOTECH

Aadya Power Projects

(An ISO 9001 : 2008 Company)

E-5, Site-IV, Industrial Area, Sahibabad, Ghaziabad (U.P)-201010

528-529, Udyog Kendra, Ecotech-III Greater Noida Gautam Buddha Nagar (U.P) 201306

Tel : +91 9811252267, 0120-4547951

E-mail : aadyapower@gmail.com | Website : www.aadyagroup.co.in